

SF-750 FLOWBENCH

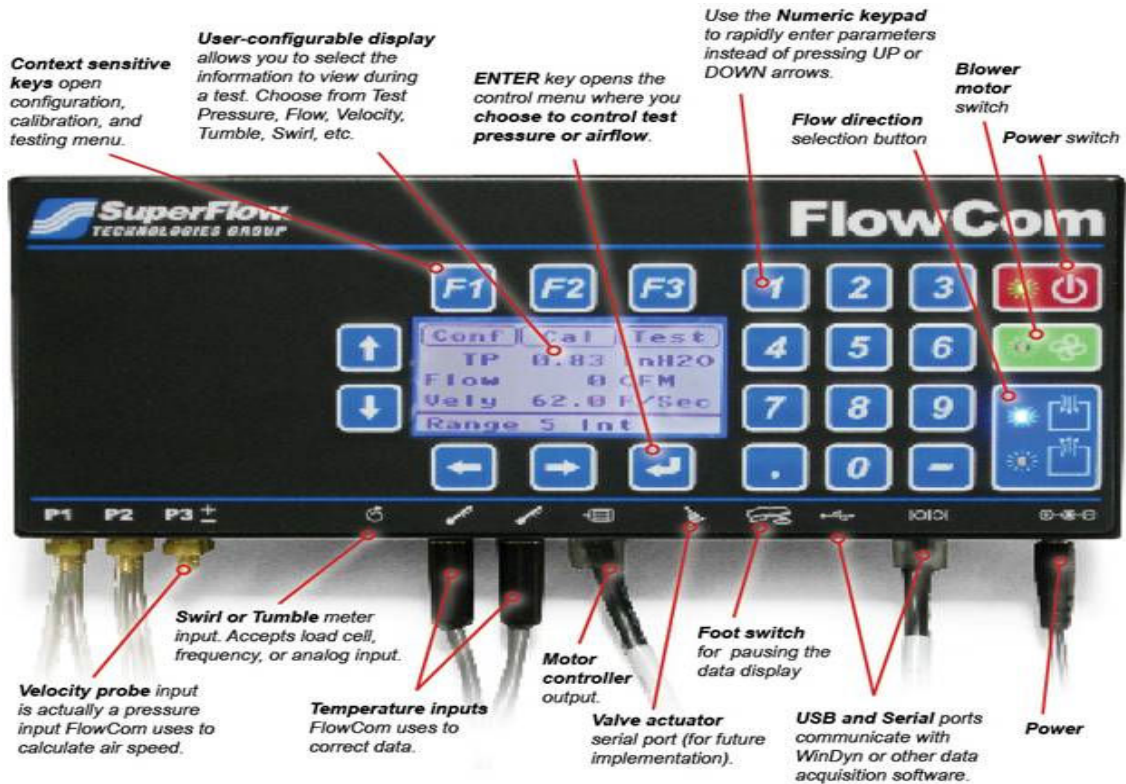
The SF-750 Flowbench is for serious engine builders and cylinder head porting operations. It includes the popular FlowCom digital airflow measurement system. 575 cfm at 25 in. of water test pressure.



Overview

The SF-750 is the new standard in digital flow testing, with more capacity and increased accuracy with digital measurements. It flows 575 cfm at 25" of water. The SF-750 comes standard with our FlowCom™ digital airflow measurement system for accurate, repeatable and fast testing. FlowCom™ ensures accurate digital airflow measurement and control by automatically measuring test pressure and temperature; then presenting corrected flow data on the easy-to-read, precision display. This saves time when compared with standard manometer type benches that require users to make calculations to achieve corrected flow numbers. The included automatic motor controller maintains constant test pressure without the use of knobs and valves and it also helps extend motor life by reducing heat generated during operation. Reduced heat means that operators can run the SF-750 for longer durations than benches lacking the motor control feature.

FlowCom Controls Overview



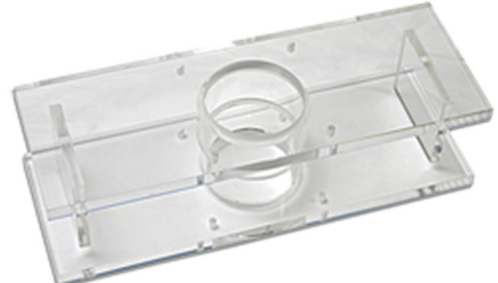
Product Specifications

Calibration Test	25" of water
Range	0-750 cfm
Capacity	660 cfm @ 25" of water
Power	240 VAC, 12A, single phase
Weight	400 lbs (182 kg)
Dimensions	35 x 27 x 80 in. (89 x 69 x 204 cm)

Product Options

Head Adapters

SuperFlow offers cylinder head adapters for several applications. Custom adapters also available.



Holley Adapter Kits

SuperFlow offers carb adapters for several applications. Call or visit Superflow.com for more info.



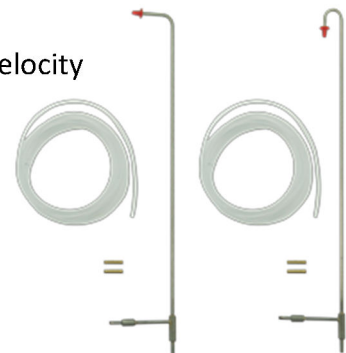
Motor Controller

Regulates test pressure based on input from FlowCom



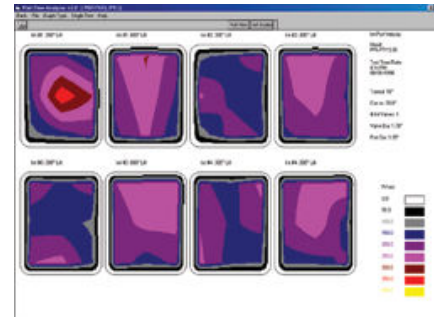
Pitot Tubes

SuperFlow offers Pitot Tubes, a compact device to measure velocity within the port. When used in conjunction with Port Flow Analyzer Pro Software, it performs port velocity mapping.



Port Flow Analyzer

Windows®-based flow bench software left you analyze, graph and print airflow data from your PC



RTS Tooling Pressure Differential Valves

RTS Tooling's Pressure Differential (PD) Valves measure pressure differentials in the valve flow area without obstructing the flow path of the air being tested. This allows users to obtain accurate, repeatable results along with additional information not typically compiled in air flow tests using standard mapping technology. The included PD Valve software compiles and stores all the data from tests numerically. The program also graphically displays pressure differentials in color, as well as, velocity and radial flow. As a result, the PD Valve Software is able to identify specific problem areas in the test subject and provide valuable data for improvements.



Call or email Promand today to discuss your application and dyno test requirements in detail.

Email: sales@promand.com Call: +614 3011 8253