

SF-1020-SB SUPERBENCH

The SF-1020 Superbench is the premier SuperFlow flowbench and the only one on the market to include SuperFlow's WinDyn Data Acquisition System for advanced testing and data analysis. 1,100 cfm at 25 in. of water test pressure.



Overview

The SF-1020 SuperBench comes standard with all of the features of the SF-1020 plus SuperFlow's® WinDyn® Data Acquisition System for advanced data analysis. With its advanced electronics, the SuperBench is well suited for flow analysis in industrial and scientific applications. The included electronics and WinDyn® software allow users to perform automated tests and then quickly analyze the data. Additionally, the automated testing eliminates operator induced variables making the SuperBench extremely repeatable and accurate. It can test up to 240 hp (179 kW) per cylinder at test pressures up to 65" (165 cm) of water. The unique variable flow orifice adjusts flow range between 25 cfm and 1,000 cfm (12 - 472 l/s), based on computer input, to fit the valve size or valve lift.

WinDyn 3.2 - Data Acquisition and Control Systems

WinDyn is a robust and scalable data acquisition and control system designed for use with flowbench and other drive train testing applications. WinDyn is delivered and ready to run with pre-configured test sequences to keep operation simple and easy to understand. WinDyn can also be completely customized to an application with custom test scripts, custom data acquisition configurations and full automation of the test cell and test process.



Product Specifications

Calibration Test	25" of water
Range	0-1,100 cfm
Intake Capacity	1,100 cfm @ 25" of water
Exhaust Capacity	1,000 cfm @ 25" of water
Power	240 VAC, 75A, single phase
Weight	563 lbs (255 kg)
Dimensions	48 x 33 x 43 in. (122 x 84 x 110 cm)

Product Options

Head Adapters

SuperFlow offers cylinder head adapters for several applications. Custom adapters also available.



Holley Adapter Kits

SuperFlow offers carb adapters for several applications. Call or visit Superflow.com for more info.



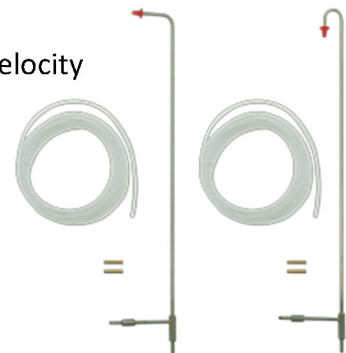
Motor Controller

Regulates test pressure based on input from FlowCom



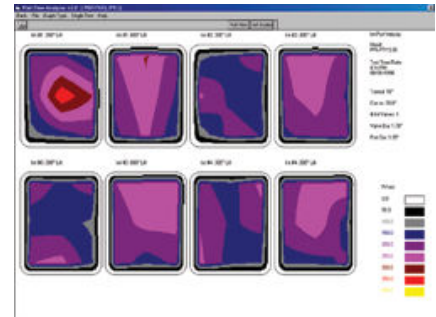
Pitot Tubes

SuperFlow offers Pitot Tubes, a compact device to measure velocity within the port. When used in conjunction with Port Flow Analyzer Pro Software, it performs port velocity mapping.



Port Flow Analyzer

Windows®-based flow bench software left you analyze, graph and print airflow data from your PC



RTS Tooling Pressure Differential Valves

RTS Tooling's Pressure Differential (PD) Valves measure pressure differentials in the valve flow area without obstructing the flow path of the air being tested. This allows users to obtain accurate, repeatable results along with additional information not typically compiled in air flow tests using standard mapping technology. The included PD Valve software compiles and stores all the data from tests numerically. The program also graphically displays pressure differentials in color, as well as, velocity and radial flow. As a result, the PD Valve Software is able to identify specific problem areas in the test subject and provide valuable data for improvements.



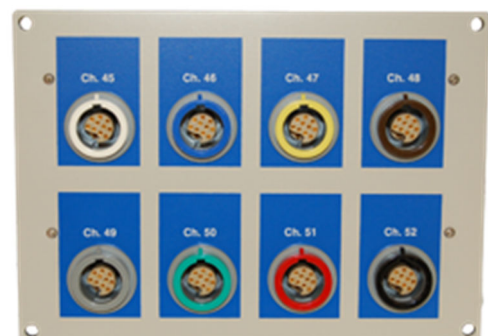
Catalytic Converter Flow Adapters

Adapter rings to quickly fit various sizes of catalytic converters and catalyst elements to the flowbench base plate for flow testing.



Analog Panel

8 channel analog panel to integrate exhaust gas analyzers lambda sensors, O2 sensors, etc. Select 0-1V, 0-5V, 0-10V, 0-20V or 0-30V in any combination.



Pressure Sensor Expansion Panels

The modular sensor box allows for additional 10-channel pressure panels and additional 16-channel temperature panels. Extra transducers are sold separately.



Temperature Sensor Expansion Kits

Expand your sensor box with a 16-channel thermocouple panel for Type K, Type J or Type T thermocouples. Monitor oil and water temperatures live in our WinDyn software then save the data for easy posttest graphing and analysis.



Call or email Promand today to discuss your application and dyno test requirements in detail.

Email: sales@promand.com Call: +614 3011 8253