

## SF-1020 PROBENCH

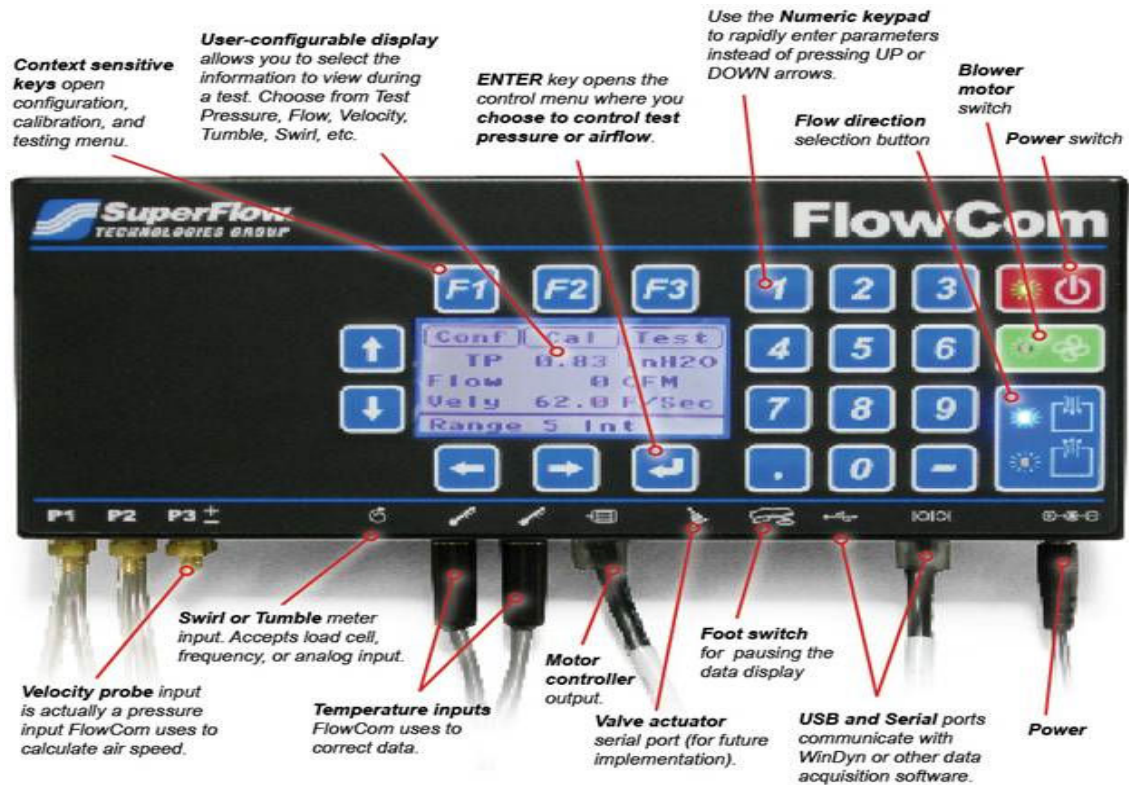
*The SF-1020 Probench measures and records air flow at OEM engineering accuracy. It includes the FlowCom digital airflow measurement system and a unique variable flow orifice that adjusts the flow range between 25 cfm and 1,000 cfm. 1,100 cfm at 25 in. of water test pressure.*



### Overview

The SF-1020 measures and records air flow at OEM engineering accuracy, faster than any other flowbench on the market. It can test up to 240 hp (179 kW) per cylinder at test pressures up to 65" (165 cm) of water. The unique variable flow orifice adjusts flow range between 25 cfm and 1,000 cfm (12 - 472 l/s), based on FlowCom™ input, to fit the valve size or valve lift. The SF-1020 comes standard with our FlowCom™ digital airflow measurement system for accurate, repeatable and fast testing. FlowCom™ ensures accurate digital airflow measurement and control by automatically measuring test pressure and temperature; then presenting corrected flow data on the easy-to-read, precision display. This saves users considerable time when compared with standard manometer type benches that require users to make calculations to achieve corrected flow numbers.

## FlowCom Controls Overview



## Product Specifications

Calibration Test	25" of water
Range	0-1,100 cfm
Intake Capacity	1,100 cfm @ 25" of water
Exhaust Capacity	1,000 cfm @ 25" of water
Power	240 VAC, 75A, single phase
Weight	563 lbs (255 kg)
Dimensions	48 x 33 x 43 in. (122 x 84 x 110 cm)

## Product Options

### Head Adapters

SuperFlow offers cylinder head adapters for several applications. Custom adapters also available.



### Holley Adapter Kits

SuperFlow offers carb adapters for several applications. Call or visit Superflow.com for more info.



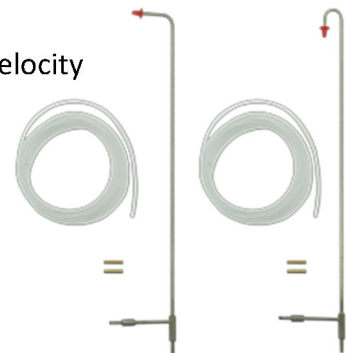
### Motor Controller

Regulates test pressure based on input from FlowCom



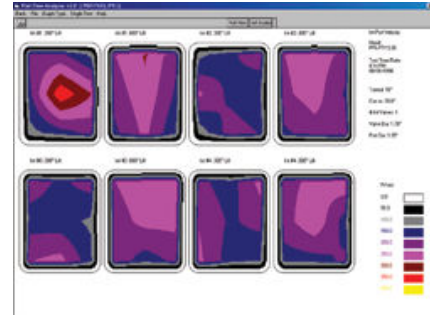
### Pitot Tubes

SuperFlow offers Pitot Tubes, a compact device to measure velocity within the port. When used in conjunction with Port Flow Analyzer Pro Software, it performs port velocity mapping.



### Port Flow Analyzer

Windows®-based flow bench software left you analyze, graph and print airflow data from your PC



### RTS Tooling Pressure Differential Valves

RTS Tooling's Pressure Differential (PD) Valves measure pressure differentials in the valve flow area without obstructing the flow path of the air being tested. This allows users to obtain accurate, repeatable results along with additional information not typically compiled in air flow tests using standard mapping technology. The included PD Valve software compiles and stores all the data from tests numerically. The program also graphically displays pressure differentials in color, as well as, velocity and radial flow. As a result, the PD Valve Software is able to identify specific problem areas in the test subject and provide valuable data for improvements.



### Catalytic Converter Flow Adapters

Adapter rings to quickly fit various sizes of catalytic converters and catalyst elements to the flowbench base plate for flow testing.



*Call or email Promand today to discuss your application and dyno test requirements in detail.*

*Email: [sales@promand.com](mailto:sales@promand.com) Call: +614 3011 8253*